

FASTRAK

QUICK SHIP

Desks

ELEVATE PLYMOUTH



FK-PNH7364-ADJG4-__

-D17	-C88
-S05	
Vision Vava with Slate Grey Armor Edge™	WB Hardrock Maple with Black Armor Edge™

20" x 28.5" Beveled Lotz Armor Edge™ HPL Plymouth Shape Top with Elevate or Junior Elevate Base, Smooth Silver, Nylon Glides and Casters. Optional **OnVoy** Top in Vision Vava only, add **/T** to Top Color Code.

UNE-T PLYMOUTH



FK-UNET7362-EJAG4-__

-D17	-C88
-S05	
Vision Vava with Slate Grey Armor Edge™	WB Hardrock Maple with Black Armor Edge™

20" x 27" Beveled Lotz Armor Edge™ HPL Plymouth Shape Top with UNE-T Universal Adjustable Legs, Smooth Silver and Nylon Glides. Optional **OnVoy** Top in Vision Vava only, add **/T** to Top Color Code.

ELO® PLYMOUTH II



FK-ELP7366-ADJG4-__

-D17	-C88
-S05	
Vision Vava with Slate Grey Armor Edge™	WB Hardrock Maple with Black Armor Edge™

20" x 28.5" Beveled Lotz Armor Edge™ HPL Plymouth II Shape Top with (4) 2" Legs, Smooth Silver & Nylon Glides. (Unless otherwise noted) Optional **OnVoy** Top in Vision Vava only, add **/T** to Top Color Code.

For ELO® Leg options, see page 3



Scinnie Chairs

CANTILEVER

4-LEGGED



FK-CHR18-C-__



FK-CHR18-4-__

-PCH
Charcoal

-P09
Black

Stackable chairs available in three heights: 14", 16" and 18". Choice of Charcoal and Black with the option of 4-Legged or Cantilever.

CHAIR & DESK HEIGHT GUIDE

Grade Level	K-2	3-5	6-12
Age Range	6-8	9-11	12-18
Chair Height	14"	16"	18"
Sitting Surface Height	23-25	25-28	28-30
Standing Surface Height	29-31	31-34	34-42
Leg Height	-EJA	-ADJ	-ADJ

-ADJ = Standard Height Adjustable Leg
-EJA = Junior Height Adjustable Leg

Tables

ELO® RECTANGLE TABLE



FK-ELS7071-ADJG4-__

-D17
-S05

Vision Vava with Slate Grey Armor Edge™

-C88

WB Hardrock Maple with Black Armor Edge™

24" x 60" Beveled Lotz Armor Edge™ HPL Top with (4) 2" Legs, Smooth Silver and Nylon Glides. (Unless otherwise noted)

For ELO® Leg options, see page 3

FLIP TOP TABLE



FK-FTT7071-FXG4-__

-D17
-S05

Vision Vava with Slate Grey Armor Edge™

-C88

WB Hardrock Maple with Black Armor Edge™

24" x 60" Beveled Lotz Armor Edge™ HPL Top with Y-Base, Fixed Height, Smooth Silver and Locking Casters.

Teacher's Desk & Lectern

ELEVATE TEACHER'S LECTERN

3mm Edge Crescent Shaped HPL Top with Adjustable Height X-Base, Foot Pedal, Smooth Silver, Grand Hank Glides and Casters.



FK-PNX6833-ADJG4-D17-L07

Made to fit together!



FK-TD6374-95UNETG4-AC-__

UNIVERSAL APPLETON TEACHER'S DESK

2 Drawers, Gang Lock, 1 File Drawer, UNE-T Leg and Casters. (Cabinet and Leg can be installed on the Right or Left).

-D17
-L07
Vision Vava with 3mm Wrought Iron Edge Banding

Top - HPL
-D17
-L07
Vision Vava with 3mm Wrought Iron Edge Banding

Casebody - TFL
-CV/T
-CV
Folkstone with Matching Edge Banding
-C88/T
-C88
WB Hardrock Maple with Matching Edge Banding

Bookcases & Storage

TOTE STORAGE

Classic Mobile Triple Wide 3" Tote Tray Storage (30 Translucent Totes)



FK-SSG0348-0AC-__

-CV/T	-C88/T
-CV	-C88
Folkstone with Matching Edge Banding	WB Hardrock Maple with Matching Edge Banding

BOOKCASES

Classic Modular Single Sided Bookcase



FK-LRS1140-363612-AL-__

Classic Mobile Single Sided Bookcase

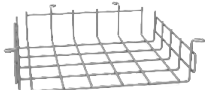


FK-LRS1140-363616-AC-__

-CV/T	-C88/T
-CV	-C88
Folkstone with Matching Edge Banding	WB Hardrock Maple with Matching Edge Banding

Adjustable Shelf/Shelves,
Modular Shelf Depth 11" | Mobile Shelf Depth 15"

Accessories



Metal Wire Basket (-LW)



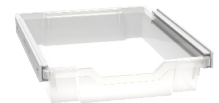
Plastic Book Box ELO® (-P23CH)



Plastic Book Box Elevate (-P20CH)



Plastic Book Box UNE-T (-P16CH)



3" Tote Tray & Runners 12mm (Kit) (-GKTS) Translucent



Backpack Hook (-BPH)



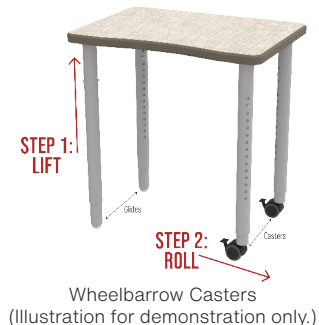
Grand Hank Glide (-HG) (Set of 4)



60mm Dual Wheel Soft Tread Casters, Locking (-CA) (Set of 4)

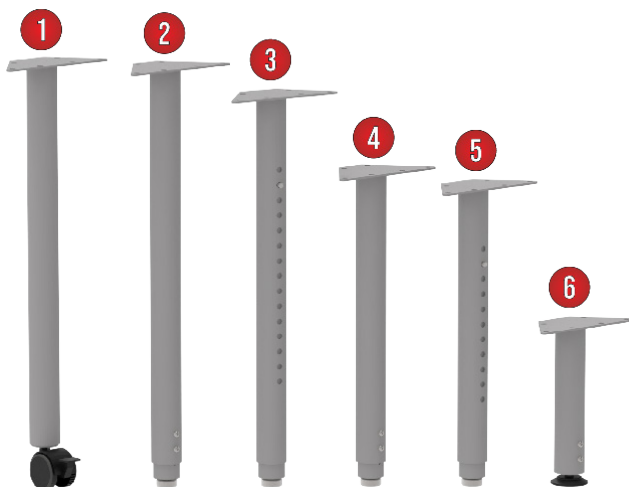


Wheelbarrow Locking Casters (See Illustration) (-2CA) (Set of 2)



Wheelbarrow Casters (Illustration for demonstration only.)

ELO® TABLE & DESK LEG OPTIONS



#	LEG DESCRIPTION	LEG PART #
1	ELO® 2" Fixed Straight Round Legs with Casters (Leg Height 28.11")	ELS -FX-CA
2	ELO® 2" Adj. Straight Round Leg (Leg Height 25"- 40")	ELS -ADJ
3	ELO® 2" Pin Adj. Straight Round Legs (Leg Height 25"- 39")	ELP -ADJ
4	ELO® 2" Universal Jr. Adj. Straight Round Legs (Leg Height 19"- 29")	ELP -EJA
5	ELO® 2" Universal Jr. Pin Adj. Straight Round Legs (Leg Height 20"- 33")	ELS -EJA
6	ELO® 2" Mini Jr. Adj. Straight Round Legs with Grand Hank Glides (Leg Height 10.75"- 17.75")	ELS -MJA

Product Numbers

STUDENT DESKS
PRODUCT
FK-ELP7366-ADJG4-__
FK-ELP7366-ADJG4-D17/IT-S05
FK-ELP7366-EJAG4-__
FK-ELP7366-EJAG4-D17/IT-S05
FK-ELS7366-ADJG4-__
FK-ELS7366-ADJG4-D17/IT-S05
FK-ELS7366-EJAG4-__
FK-ELS7366-EJAG4-D17/IT-S05
FK-ELS7366-FXG4-__-CA
FK-ELS7366-FXG4-D17/IT-S05-CA
FK-ELS7366-MJAG4-__
FK-ELS7366-MJAG4-D17/IT-S05
FK-PNH7364-ADJG4-__
FK-PNH7364-ADJG4-D17/IT-S05
FK-PNH7364-EJAG4-__
FK-PNH7364-EJAG4-D17/IT-S05
FK-UNET7362-EJAG4-__
FK-UNET7362-EJAG4-D17/IT-S05

/IT signifies OnVoy Series.

*-__ Indicates an available color choice.
Fill in with the color codes.*

TABLES
PRODUCT
FK-ELS7071-EJAG4-__
FK-ELS7071-ADJG4-__
FK-ELS7071-MJAG4-__
FK-ELS7071-FXG4-__-CA
FK-ELP7071-EJAG4-__
FK-ELP7071-ADJG4-__
FK-FTT7071-FXG4-__

TEACHER'S DESK & LECTERN
PRODUCT
FK-PNX6833-ADJG4-D17-L07
FK-TD6374-95UNETG4-AC-__

Pricing is net dealer pricing. Standard volume discounts do not apply. Fastrak orders must be placed separate from standard product orders. All orders will ship via LTL freight. Not eligible for incentive/rebate programs. For quantities over 100 please contact customer service.

STORAGE
PRODUCT
FK-SSG0348-0AC-__
FK-LRS1140-363616-AC-__
FK-LRS1140-363612-AL-__

CHAIRS
PRODUCT
FK-CHR14-4-__
FK-CHR16-4-__
FK-CHR18-4-__
FK-CHR14-C-__
FK-CHR16-C-__
FK-CHR18-C-__

ACCESSORIES
PRODUCT
-LW
-P23CH
-P20CH
-P16CH
-GKTS
-HG
-BPH
-CA
-2CA



For questions or to submit your order:
 info@wibenchmfg.com
 800.242.2303
 wbmfg.com