

Plastic Book Box

specifications

Plastic Book Boxes are injected molded using high quality ABS plastic, with reinforced bottoms to bolster strength preventing book boxes from bowing. Made to last with their durability and wear resistance, they are the perfect addition under our desks and tables.

Plastic Book Boxes are attached to the underside of desks and tables with black, #14 x 7/8" hex drive screws and black, 3/4" outer diameter, 1/4" inner diameter, 18-gauge washers.

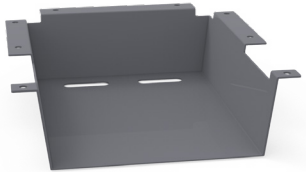
Available in textured charcoal finish (CH).



Charcoal Finish



UNET7363-ADJ
shown with -P16CH
charcoal book box



-P14CH

Available with ELO® Legs

Dimensions:

Outside (Actual): 13.75W" x 14.834D" x 4.157H"

Weight: 1lb

SKU: 04068684-CH



-P20CH

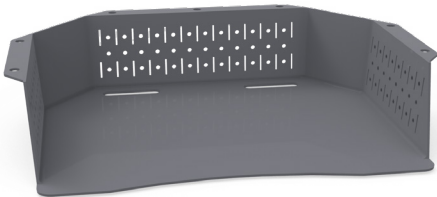
Available on Elevate Desks and EPIC Tables

Dimensions:

Outside (Actual): 20W" x 11D" x 4.157H"

Weight: 1 lb

SKU: 04068686-CH



-P23CH

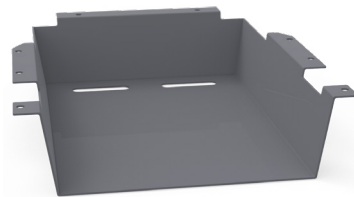
Available with ELS & ELP Legs

Dimensions:

Outside (Actual): 22.07W" x 16.5D" x 4.682H"

Weight: 3 lbs

SKU: 04068642-CH



-P16CH

Available with UNE-T Desks

Dimensions:

Outside (Actual): 15.813W" x 17.875D" x 4.157H"

Weight: 2 lbs

SKU: 04068685-CH