

### Classic Construction:

Classic cabinets (sides, back, bottom and sub-top/sub-bottom) are constructed using fully doweled .75" particle board with double sided thermal fused laminate (TFL) with matching 3mm PVC edge banding.

Top is a 1" matching, double sided TFL top with matching 3mm PVC edge banding over a 0.75" sub-top. Custom HPL top is optional only for models with heights under 60" on the Classic models BUT standard on Premium models.

Doors are 0.75" double sided TFL, matching 3mm PVC edge banding, 4" satin nickel wire pulls and 6-point adjustable concealed hinges (European hinge).

Shelves are double sided TFL, matching 3mm PVC edge banding on front edge, adjustable shelves have four double-pin shelf clips per shelf to prevent the shelves from sliding out or tipping. Fixed shelves are fully doweled.

Integrated, 1" caster base with matching 3mm PVC edge banding. 3" or 5" heavy duty plate casters, two locking and two non-locking. Casters are installed onsite by others.

### Tote Trays:

3" tote trays included and translucent is standard. Additional optional colors are; Sunshine Yellow, Royal Blue, Grass Green, Flame Red, Tropical Orange, Plum Purple, Cyan Blue and Lime Jolly. 3", 6", 9" and 12" replacement tote trays are optional and can be interchangeable with desks.

**Premium Tote Storage Units** are constructed the same as the Classic **EXCEPT** the Premium cabinet components are **double sided high pressure laminate (HPL)** in place of the double sided TFL.

### Assembly:

Each unit is factory assembled using glue and dowel construction.

**Shipping Class:** Density Based

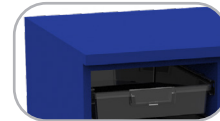
**NMFC#:** 80440



### Standard Features:



.75" fully doweled casebody construction



1" TFL countertop (Classic)  
1" HPL countertop (Premium)



4 double-pin clips



Wire pulls



6-point adjust. hinge



3" tote trays  
(Translucent is standard)



Heavy duty locking & non-locking plate caster

### Optional Features:



Deadbolt locks (shown) or Wardrobe bar lock (optional)



6", 9" & 12" deep tote trays



Markerboard panel (-\_MB)

**3" totes come standard with these tote storage units. Translucent totes are standard. See page 432 of the Catalog for color selection.**

## Double Wide Tote Storage



SSG0230-0AC  
Shown in premium finish

### 10 Totes

| Mobile w/Casters | Wgt | W" x H" x D" | Description |
|------------------|-----|--------------|-------------|
| SSG0230-0AC      | 126 | 28 x 30 x 23 | Open        |
| SSG0230-5AC      | 145 | 28 x 30 x 23 | Doors       |

**Overall Depth: 24"** # of **OPTIONAL** deadbolt locks on -5AC model: 2



**3" totes come standard with these tote storage units. Translucent totes are standard. See page 432 of the catalog for color selection.**



SSG0234-0AC  
Shown in premium finish

### 12 Totes

| Mobile w/Casters | Wgt | W" x H" x D" | Description |
|------------------|-----|--------------|-------------|
| SSG0234-0AC      | 136 | 28 x 34 x 23 | Open        |
| SSG0234-5AC      | 157 | 28 x 34 x 23 | Doors       |

**Overall Depth: 24"** # of **OPTIONAL** deadbolt locks on -5AC model: 2



SSG0248-0AC  
Shown in premium finish

### 20 Totes

| Mobile w/Casters | Wgt | W" x H" x D" | Description |
|------------------|-----|--------------|-------------|
| SSG0248-0AC      | 171 | 28 x 48 x 23 | Open        |
| SSG0248-5AC      | 200 | 28 x 48 x 23 | Doors       |

**Overall Depth: 24"** # of **OPTIONAL** deadbolt locks on -5AC model: 2



SSG0260-0AC  
Shown in premium finish

### 26 Totes

| Mobile w/Casters | Wgt | W" x H" x D" | Description |
|------------------|-----|--------------|-------------|
| SSG0260-0AC      | 200 | 28 x 60 x 23 | Open        |
| SSG0260-5AC      | 236 | 28 x 60 x 23 | Doors       |

**Overall Depth: 24"** # of **OPTIONAL** wardrobe bar locks on -5AC model: 1

## Double Wide Tote Storage



SSG0272-0AC  
Shown in premium finish

### 32 Totes

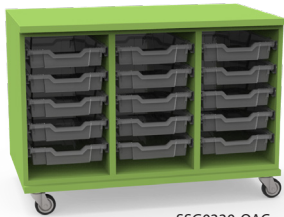
| <i>Mobile w/Casters</i> | <i>Wgt</i> | <i>W" x H" x D"</i> | <i>Description</i> |
|-------------------------|------------|---------------------|--------------------|
| SSG0272-0AC             | 229        | 28 x 72 x 23        | Open               |
| SSG0272-5AC             | 272        | 28 x 72 x 23        | Doors              |

**Overall Depth: 24"** # of *OPTIONAL* wardrobe bar locks on -5AC model: 1



**3" totes come standard with these tote storage units. Translucent totes are standard.**  
**See page 432 of the catalog for color selection.**

## Triple Wide Tote Storage



SSG0330-0AC  
Shown in premium finish

### 15 Totes

| <i>Mobile w/Casters</i> | <i>Wgt</i> | <i>W" x H" x D"</i> | <i>Description</i> |
|-------------------------|------------|---------------------|--------------------|
| SSG0330-0AC             | 170        | 42 x 30 x 23        | Open               |
| SSG0330-5AC             | 198        | 42 x 30 x 23        | Doors              |

**Overall Depth: 24"** # of *OPTIONAL* deadbolt locks on -5AC model: 1



SSG0334-0AC  
Shown in premium finish

### 18 Totes

| <i>Mobile w/Casters</i> | <i>Wgt</i> | <i>W" x H" x D"</i> | <i>Description</i> |
|-------------------------|------------|---------------------|--------------------|
| SSG0334-0AC             | 184        | 42 x 34 x 23        | Open               |
| SSG0334-5AC             | 215        | 42 x 34 x 23        | Doors              |

**Overall Depth: 24"** # of *OPTIONAL* deadbolt locks on -5AC model: 1

## Triple Wide Tote Storage



SSG0348-5AC  
Shown in premium finish

### 30 Totes

| <i>Mobile w/Casters</i> | <i>Wgt</i> | <i>W" x H" x D"</i> | <i>Description</i> |
|-------------------------|------------|---------------------|--------------------|
| SSG0348-0AC             | 233        | 42 x 48 x 23        | Open               |
| SSG0348-5AC             | 276        | 42 x 48 x 23        | Doors              |

**Overall Depth: 24"** # of *OPTIONAL* deadbolt locks on -5AC model: 1



**3" totes come standard with these tote storage units. Translucent totes are standard. See page 432 of the catalog for color selection.**



SSG0360-0AC  
Shown in premium finish

### 39 Totes

| <i>Mobile w/Casters</i> | <i>Wgt</i> | <i>W" x H" x D"</i> | <i>Description</i> |
|-------------------------|------------|---------------------|--------------------|
| SSG0360-0AC             | 274        | 42 x 60 x 23        | Open               |
| SSG0360-5AC             | 326        | 42 x 60 x 23        | Doors              |

**Overall Depth: 24"** # of *OPTIONAL* wardrobe bar locks on -5AC model: 1



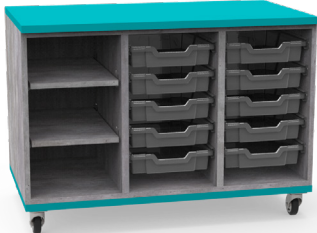
SSG0372-0AC  
Shown in premium finish

### 48 Totes

| <i>Mobile w/Casters</i> | <i>Wgt</i> | <i>W" x H" x D"</i> | <i>Description</i> |
|-------------------------|------------|---------------------|--------------------|
| SSG0372-0AC             | 315        | 42 x 72 x 23        | Open               |
| SSG0372-5AC             | 378        | 42 x 72 x 23        | Doors              |

**Overall Depth: 24"** # of *OPTIONAL* wardrobe bar locks on -5AC model: 1

## Combination Units w/ Tote Storage



SSG0630-0AC  
Shown in premium finish and optional different colored edge banding

### 10 Totes on Right, 2 Adjustable Shelves on Left

Mobile

| w/Casters   | Wgt | W" x H" x D" | Description |
|-------------|-----|--------------|-------------|
| SSG0630-0AC | 185 | 42 x 30 x 23 | Open        |
| SSG0630-5AC | 213 | 42 x 30 x 23 | Doors       |

**Overall Depth: 24"** # of OPTIONAL deadbolt locks on -5AC model: 1



**3" totes come standard with these tote storage units. Translucent totes are standard.**  
**See page 432 of the catalog for color selection.**



SSG0772-0AC  
Shown in premium finish

### 18 Totes on Bottom, 2 Adjustable Shelves on Top

Mobile

| w/Casters   | Wgt | W" x H" x D" | Description |
|-------------|-----|--------------|-------------|
| SSG0772-0AC | 306 | 42 x 72 x 23 | Open        |
| SSG0772-5AC | 369 | 42 x 72 x 23 | Doors       |

**Overall Depth: 24"** # of OPTIONAL wardrobe bar locks on -5AC model: 1



**Back View**



**Front View**

SSG0860-0AC  
Shown in premium finish

### Double Sided (13 Totes on Right and 3 Adjustable Shelves on Left, per Side)

Mobile

| w/Casters   | Wgt | W" x H" x D" | Description |
|-------------|-----|--------------|-------------|
| SSG0860-0AC | 401 | 34 x 60 x 42 | Open        |
| SSG0860-5AC | 449 | 34 x 60 x 42 | Doors       |

**Overall Depth: 44"** # of OPTIONAL wardrobe bar locks on -5AC model: 2