

# WB Mfg

WB Manufacturing LLC



**casework** USA<sup>®</sup>  
BY WB MANUFACTURING

- **Durable cabinets built for schools, offices, and more.**

## We Can.

**DESIGN. BUILD. DELIVER.**



wibenchmfg.com  
info@wibenchmfg.com  
800-242-2303



# Featured Hardware



6 Point Adjustable Hinge. Brushed Chrome (Standard)



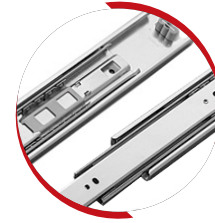
5 Point Adjustable Hinge Brushed Chrome



Wire Pull Brushed Chrome (Standard)



Shelves w/ Double Pin Clips 0.75" Shelves



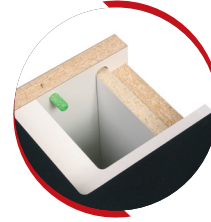
Full Extension Side Mount Steel Ball Bearing Glide



Coat Hook Brushed Chrome



Deadbolt Lock Brushed Chrome (Optional)

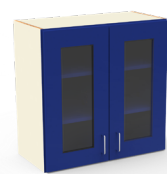


Casebody Construction 0.75" Fully Doweled



## Guide To Choosing Your Finish

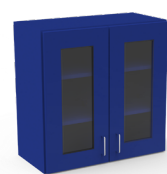
### Classic



- Decorative high pressure laminate (HPL) on exposed surfaces.
  - Door and drawer fronts
  - Wall cabinet bottoms
  - Interiors with sliding doors
- Exposed ends
- Open interiors
- Interiors behind glass doors.

- White thermal fused laminate (TFL) on all other cabinet surfaces.
- Drawer boxes are always white, thermal fused laminate (TFL).

### Premium



- Double sided high pressure laminate (HPL) applied to all surfaces of cabinets.
- Drawer boxes are always white, thermal fused laminate (TFL).

### Standard HPL Colors

Vertical Grain	-Z09	-A02	-32	-R01	-C15	-B58	Solid	-04	-09	-N5	-05	-CV	Pattern	-C97	-A19	-A73
	American Cherry	Asian Night	Bannister Oak	Blue Agave	Buka Bark	Burnt Strand		Almond	Black	Cassis	Dove Grey	Folkstone		Beachcomber	Chocolate Warp	Classic Linen
	-D08	-94	-FV	-KA	-C99	-D11		-C98	-60	-A40	-14	-A41		-D19	-25	-HL
	Eggplant	Fusion Maple	Honey Maple	Kensington Maple	Little Black Dress	Love Letters	Fresh Papaya	Hollyberry	Island	Lapis Blue	Ocean	Cookies & Cream	Grey Nebula	Woolamai Brush		
	-SR	-D18	-D12	-T01	-C09	-D22	-A18	-D13	-03	-L07		-D17				
	Oiled Cherry	Picnic in the Park	Sleeping In	Sprout	Tangerine	Walnut Grove	Sol	Summer Vacation	White	Wrought Iron		Vision Vava				











# Base Cabinets



**We Can.**  
**DESIGN. BUILD. DELIVER.**



# Base Cabinets



Open Base Cabinets



Open Cabinets w/ Drawers



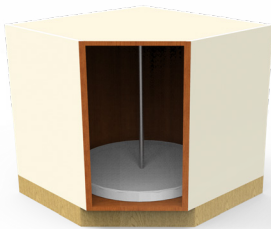
Door & Drawer Base Cabinets



Door Base Cabinets



Sliding Door Base Cabinets



Open Corner Base Cabinets



Corner Base Cabinets/ Door



Blind Corner Base Cabinets



Sink Base Cabinets



Drawer Base Cabinets

Numerous CaseworkUSA® Base Cabinet configurations and sizes available.  
Go to [www.wibenchmfg.com/caseworkusa](http://www.wibenchmfg.com/caseworkusa) for details.

## CaseworkUSA® Overview

- Classic Finish (C):** Decorative high pressure laminate (HPL) on exposed surfaces; door fronts, drawer fronts, exposed ends, wall cabinet bottoms, open interiors, interiors with sliding doors and behind glass doors. White thermal fused laminate (TFL) on semi-exposed and hidden surfaces. Drawer boxes are always white, thermal fused laminate (TFL).
- Premium Finish (P):** Double sided high pressure laminate (HPL) applied to all surfaces of cabinets. Drawer boxes are always white, thermal fused laminate (TFL).
  - Case:** Fully doweled 0.75", full subtop and 0.5" inset back fully housed at top, bottom and back, matching 3mm PVC edge banding
  - Top:** 1" (HPL) w/ 0.75" backsplash up to 144" (sold separately, field installed), matching 3mm PVC edge banding
  - Drawers:** Fully doweled 0.5" white TFL box w/ .5mm PVC edge banding, 0.75" matching HPL front w/ 3mm PVC edge banding, wire pulls, standard full extension side mount steel ball bearing glide
  - Doors:** 0.75" HPL door fronts, 3mm PVC edge banding, wire pulls, 6-point adjustable concealed hinge (European hinge)
  - Shelves:** 0.75" white TFL on interior shelves, HPL on exposed shelves and HPL on interior shelves on open units (fixed are fully doweled, adjustable have 4 double-pin shelf clips)
  - Base:** 0.75" exterior grade plywood ladder, applied base (vinyl baseboard not included) or fabricated without base
- Optional:** Locks

**Classic:** *Select 1 HPL color on exposed surfaces*

**Premium:\*** *Select 1 HPL color on all surfaces*

### Standard HPL Colors

Vertical Grain	<b>-Z09</b> American Cherry	<b>-A02</b> Asian Night	<b>-32</b> Bannister Oak	<b>-R01</b> Blue Agave	<b>-C15</b> Buka Bark	<b>-B58</b> Burnt Strand	Solid	<b>-04</b> Almond	<b>-09</b> Black	<b>-N5</b> Cassis	<b>-05</b> Dove Grey	<b>-CV</b> Folkstone	Pattern	<b>-C97</b> Beachcomber	<b>-A19</b> Chocolate Warp	<b>-A73</b> Classic Linen
	<b>-D08</b> Eggplant	<b>-94</b> Fusion Maple	<b>-FV</b> Honey Maple	<b>-KA</b> Kensington Maple	<b>-C99</b> Little Black Dress	<b>-D11</b> Love Letters		<b>-C98</b> Fresh Papaya	<b>-60</b> Hollyberry	<b>-A40</b> Island	<b>-14</b> Lapis Blue	<b>-A41</b> Ocean		<b>-D19</b> Cookies & Cream	<b>-25</b> Grey Nebula	<b>-HL</b> Woolamai Brush
	<b>-SR</b> Oiled Cherry	<b>-D18</b> Picnic in the Park	<b>-D12</b> Sleeping In	<b>-T01</b> Sprout	<b>-C09</b> Tangerine	<b>-D22</b> Walnut Grove		<b>-A18</b> Sol	<b>-D13</b> Summer Vacation	<b>-03</b> White	<b>-L07</b> Wrought Iron	<b>-D17</b> Vision Vava				





# Wall Cabinets



**We Can.**  
**DESIGN. BUILD. DELIVER.**





# Wall Cabinets



Open Wall Cabinets



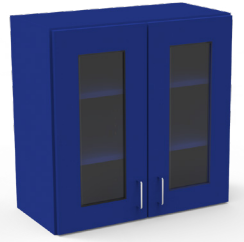
Wall Cabinets w/ Doors



Sliding Door Wall Cabinets



Sliding Glass Door Wall Cabinets



Glass Door Wall Cabinets



Open Corner Wall Cabinets



Corner Door Wall Cabinets



Corner Glass Door Wall Cabinets



Blind Corner Wall Cabinets



Accessory Wall Cabinets

Numerous CaseworkUSA® Wall Cabinet configurations and sizes available.  
Go to [www.wibenchmfg.com/caseworkusa](http://www.wibenchmfg.com/caseworkusa) for details.

## CaseworkUSA® Overview

- Classic Finish (C):** Decorative high pressure laminate (HPL) on exposed surfaces; door fronts, drawer fronts, exposed ends, wall cabinet bottoms, open interiors, interiors with sliding doors and behind glass doors. White thermal fused laminate (TFL) on semi-exposed and hidden surfaces. Drawer boxes are always white, thermal fused laminate (TFL).
- Premium Finish (P):** Double sided high pressure laminate (HPL) applied to all surfaces of cabinets. Drawer boxes are always white, thermal fused laminate (TFL).
  - Case:** Fully doweled 0.75", full subtop and 0.5" inset back fully housed at top, bottom and back, matching 3mm PVC edge banding
  - Top:** 1" (HPL) w/ 0.75" backsplash up to 144" (sold separately, field installed), matching 3mm PVC edge banding
  - Drawers:** Fully doweled 0.5" white TFL box w/.5mm PVC edge banding, 0.75" matching HPL front w/3mm PVC edge banding, wire pulls, standard full extension side mount steel ball bearing glide
  - Doors:** 0.75" HPL door fronts, 3mm PVC edge banding, wire pulls, 6-point adjustable concealed hinge (European hinge)
  - Shelves:** 0.75" white TFL on interior shelves, HPL on exposed shelves and HPL on interior shelves on open units (fixed are fully doweled, adjustable have 4 double-pin shelf clips)
  - Base:** 0.75" exterior grade plywood ladder, applied base (vinyl baseboard not included) or fabricated without base
  - Optional:** Locks

**Classic:** *Select 1 HPL color on exposed surfaces*

**Premium:\*** *Select 1 HPL color on all surfaces*

### Standard HPL Colors

Vertical Grain	<b>-Z09</b> American Cherry	<b>-A02</b> Asian Night	<b>-32</b> Bannister Oak	<b>-R01</b> Blue Agave	<b>-C15</b> Buka Bark	<b>-B58</b> Burnt Strand	Solid	<b>-04</b> Almond	<b>-09</b> Black	<b>-N5</b> Cassis	<b>-05</b> Dove Grey	<b>-CV</b> Folkstone	Pattern	<b>-C97</b> Beachcomber	<b>-A19</b> Chocolate Warp	<b>-A73</b> Classic Linen
	<b>-D08</b> Eggplant	<b>-94</b> Fusion Maple	<b>-FV</b> Honey Maple	<b>-KA</b> Kensington Maple	<b>-C99</b> Little Black Dress	<b>-D11</b> Love Letters		<b>-C98</b> Fresh Papaya	<b>-60</b> Hollyberry	<b>-A40</b> Island	<b>-14</b> Lapis Blue	<b>-A41</b> Ocean		<b>-D19</b> Cookies & Cream	<b>-25</b> Grey Nebula	<b>-HL</b> Woolamai Brush
	<b>-SR</b> Oiled Cherry	<b>-D18</b> Picnic in the Park	<b>-D12</b> Sleeping In	<b>-T01</b> Sprout	<b>-C09</b> Tangerine	<b>-D22</b> Walnut Grove		<b>-A18</b> Sol	<b>-D13</b> Summer Vacation	<b>-03</b> White	<b>-L07</b> Wrought Iron	<b>-D17</b> Vision Vava				



# Tall Cabinets



**We Can.**  
**DESIGN. BUILD. DELIVER.**



# Tall Cabinets



Open Tall Cabinets



Door Tall Cabinets



Glass Door Tall Cabinets



Double Door Tall Cabinets



Double Glass Door Tall Cabinets



Split Glass Door Tall Cabinets



Split-Door Tall Cabinets



Double Split-Door Tall Cabinets



Double Glass Split-Door Tall Cabinets



Specialty Tall Cabinets



Open Tall Wardrobe Cabinets



Door Tall Wardrobe Cabinets

Numerous CaseworkUSA® Tall Cabinet configurations and sizes available.  
Go to [www.wibenchmfg.com/caseworkusa](http://www.wibenchmfg.com/caseworkusa) for details.

## CaseworkUSA® Overview

- Classic Finish (/C):** Decorative high pressure laminate (HPL) on exposed surfaces; door fronts, drawer fronts, exposed ends, wall cabinet bottoms, open interiors, interiors with sliding doors and behind glass doors. White thermal fused laminate (TFL) on semi-exposed and hidden surfaces. Drawer boxes are always white, thermal fused laminate (TFL).
- Premium Finish (/P):** Double sided high pressure laminate (HPL) applied to all surfaces of cabinets. Drawer boxes are always white, thermal fused laminate (TFL).
- Case:** Fully doweled 0.75", full subtop and 0.5" inset back fully housed at top, bottom and back, matching 3mm PVC edge banding
- Top:** 1" (HPL) w/ 0.75" backsplash up to 144" (sold separately, field installed), matching 3mm PVC edge banding
- Drawers:** Fully doweled 0.5" white TFL box w/.5mm PVC edge banding, 0.75" matching HPL front w/3mm PVC edge banding, wire pulls, standard full extension side mount steel ball bearing glide
- Doors:** 0.75" HPL door fronts, 3mm PVC edge banding, wire pulls, 6-point adjustable concealed hinge (European hinge)
- Shelves:** 0.75" white TFL on interior shelves, HPL on exposed shelves and HPL on interior shelves on open units (fixed are fully doweled, adjustable have 4 double-pin shelf clips)
- Base:** 0.75" exterior grade plywood ladder, applied base (vinyl baseboard not included) or fabricated without base
- Optional:** Locks

**Classic:** *Select 1 HPL color on exposed surfaces*

**Premium:\*** *Select 1 HPL color on all surfaces*

### Standard HPL Colors

Vertical Grain	<b>-Z09</b> American Cherry	<b>-A02</b> Asian Night	<b>-32</b> Bannister Oak	<b>-R01</b> Blue Agave	<b>-C15</b> Buka Bark	<b>-B58</b> Burnt Strand	<b>-04</b> Almond	<b>-09</b> Black	<b>-N5</b> Cassis	<b>-05</b> Dove Grey	<b>-CV</b> Folkstone	<b>-C97</b> Beachcomber	<b>-A19</b> Chocolate Warp	<b>-A73</b> Classic Linen
	<b>-D08</b> Eggplant	<b>-94</b> Fusion Maple	<b>-FV</b> Honey Maple	<b>-KA</b> Kensington Maple	<b>-C99</b> Little Black Dress	<b>-D11</b> Love Letters	<b>-C98</b> Fresh Papaya	<b>-60</b> Hollyberry	<b>-A40</b> Island	<b>-14</b> Lapis Blue	<b>-A41</b> Ocean	<b>-D19</b> Cookies & Cream	<b>-25</b> Grey Nebula	<b>-HL</b> Woolamai Brush
	<b>-SR</b> Oiled Cherry	<b>-D18</b> Picnic in the Park	<b>-D12</b> Sleeping In	<b>-T01</b> Sprout	<b>-C09</b> Tangerine	<b>-D22</b> Walnut Grove	<b>-A18</b> Sol	<b>-D13</b> Summer Vacation	<b>-03</b> White	<b>-L07</b> Wrought Iron	<b>-D17</b> Vision Vava			





# 5 Common Layouts



## Layout 1

- Left end of cabinet needs a base scribe/filler.
- Right end of cabinet needs a finished end.

**A** Base Scribe/Filler      **B** Finished End



## Layout 2

- Both ends of the cabinet need a base scribe/filler.

**C** Base Scribe/Filler



## Layout 3

- Both ends of the cabinet need finished ends.

**D** Finished End



## Layout 4

- Both ends of the cabinets need finished ends.
- Middle of the cabinet needs a base corner filler.

**E** Finished End      **F** Base Corner Filler



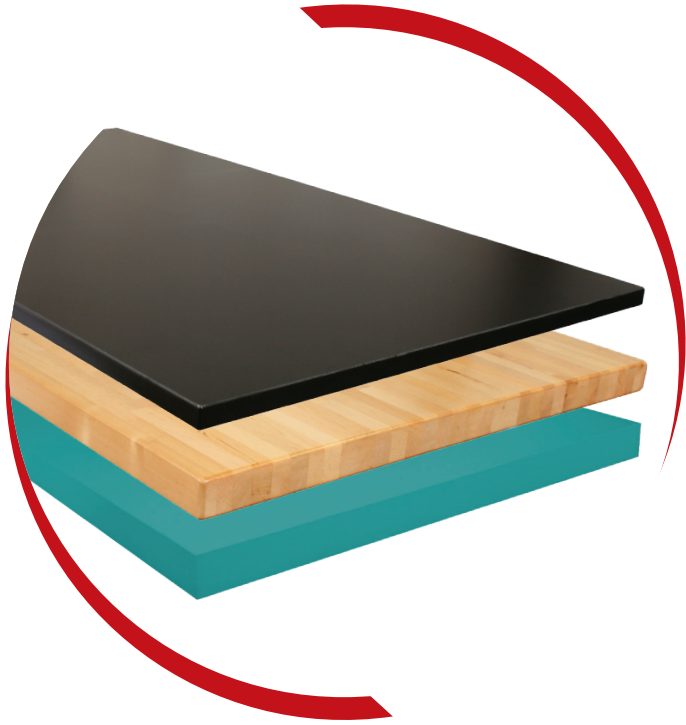
## Layout 5

- Both ends of the cabinets need finished ends.
- 2 base corner fillers are needed where the cabinets meet in the corners.

**G** Finished End      **H** Base Corner Filler



# Finishing Touches



*Add a Phenolic Resin, Butcher Block, or High Pressure Laminate Top to Complete Your CaseworkUSA® Cabinet.*

## Phenolic Resin

With high resistance to chemicals, humidity and abrasion, our standard 1" thick black phenolic resin tops provide the perfect surface for lab tops, shelves and panels.



## Butcher Block

Butcher block benchtops are rugged, yet yielding, providing a safe surface for crafted from face-glued hardwood strips, sanded to a smooth finish for outstanding strength and quality appearance.

## High Pressure Laminate

Perfect for assembly and packing stations, our high-pressure laminate (HPL) tops are easy to clean and are resistant to mars, burns, stains, oils and most solvents. HP laminate tops are constructed with a phenolic or resin backer sheet to balance the construction and are also available with a chemical resistant surface.

### Standard HPL Colors

<b>-Z09</b> American Cherry	<b>-A02</b> Asian Night	<b>-32</b> Bannister Oak	<b>-R01</b> Blue Agave	<b>-C15</b> Buka Bark	<b>-B58</b> Burnt Strand	<b>-04</b> Almond	<b>-09</b> Black	<b>-N5</b> Cassis	<b>-05</b> Dove Grey	<b>-CV</b> Folkstone	<b>-C97</b> Beachcomber	<b>-A19</b> Chocolate Warp	<b>-A73</b> Classic Linen
<b>-D08</b> Eggplant	<b>-94</b> Fusion Maple	<b>-FV</b> Honey Maple	<b>-KA</b> Kensington Maple	<b>-C99</b> Little Black Dress	<b>-D11</b> Love Letters	<b>-C98</b> Fresh Papaya	<b>-60</b> Hollyberry	<b>-A40</b> Island	<b>-14</b> Lapis Blue	<b>-A41</b> Ocean	<b>-D19</b> Cookies & Cream	<b>-25</b> Grey Nebula	<b>-HL</b> Woolamai Brush
<b>-SR</b> Oiled Cherry	<b>-D18</b> Picnic in the Park	<b>-D12</b> Sleeping In	<b>-T01</b> Sprout	<b>-C09</b> Tangerine	<b>-D22</b> Walnut Grove	<b>-A18</b> Sol	<b>-D13</b> Summer Vacation	<b>-03</b> White	<b>-L07</b> Wrought Iron		<b>-D17</b> Vision Vava		